



### FOCUS...

Gathering place in case of disaster : **City Hall**



## Emergency Instructions...

UNDER ANY CIRCUMSTANCES :



### Listen to the radio

the broadcasts details on the nature of the danger, evolution of the situation, and instructions to follow.



**Switch off power and gas.**



**Use mobile phones only for emergency** to not jam the communication network (essential for rescue and assistance operations).



**Do not try to pick up your children at school**, teachers know the safety instructions and will keep them safe.



**Be careful about sparks and flames, do not smoke** and get away from danger areas.

### "Safety Pack" :

- ☐ Portable Radio,
- ☐ Torches ,
- ☐ Containment equipment
- ☐ Food and Water ,
- ☐ Blankets ,
- ☐ Warm Clothes ,
- ☐ Papers ,
- ☐ Medicine (in particular daily treatment)

### Emergency Numbers



112	European Emergency Number	112
18	Firemen	18
15	SAMU (Emergency Medical Number)	15
17	Police	17

ERDF (power service) 0 810 333 011

GRDF (gas service) 0 800 473 333

Local Hazard Information Document (Document d'Information Communal sur les Risques Majeurs : DICRIM)

EMERGENCY INSTRUCTIONS

# The CAPENDU Commune

## LOCAL EMERGENCY RESPONSE PLAN

*Considering the mayor's responsibilities concerning public safety, it is of his best interest to prepare a local emergency response plan (Plan Communal de Sauvegarde).*

**This structure allows the city to deal with the first moments of a major crisis.**

**A local response plan** has been developed in 2011 and is regularly updated to bring concrete answers in case of emergency situations.

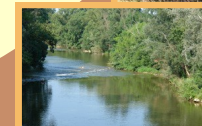
**This document contains:**

- **Main hazards types**
- **Population alert** and information means
- **Available means** in the city (communication, housing, food supplies...)
- **Operational maps**
- **Measures concerning return to normal state**



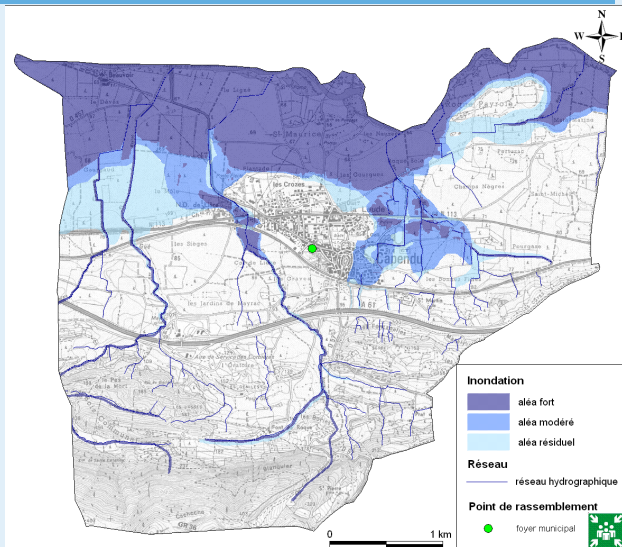
### HAZARDS ON THE COMMUNE :

- **FLOOD**
- **WILDFIRE**
- **LANDSLIDE**
- **EARTHQUAKE**
- **STORM**
- **HAZARDOUS MATERIAL TRANSPORT**
- **DAM FAILURE**
- **INDUSTRY**



# FLOOD

C



Get informed



Switch off power and gas



Head to high places



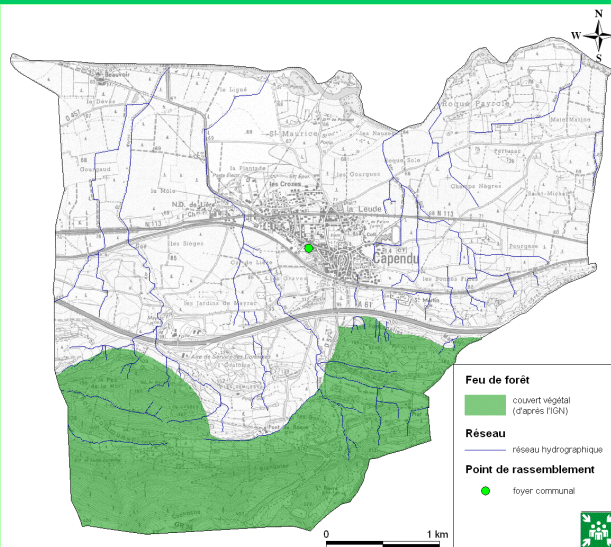
Do not use flooded roads



Do not try to evacuate by yourself

# WILDFIRE

U



Call the firemen



Take shelter and shut yourself away



Get informed

# Hazardous Substances Leak / Industrial Disaster

wn



Call 112



Take shelter



Close doors, windows and shut yourself away



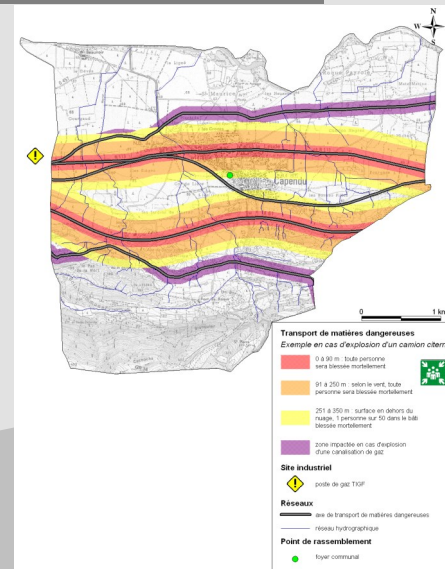
Switch off power and gas



Do not smoke



Do not try to pick up children at school



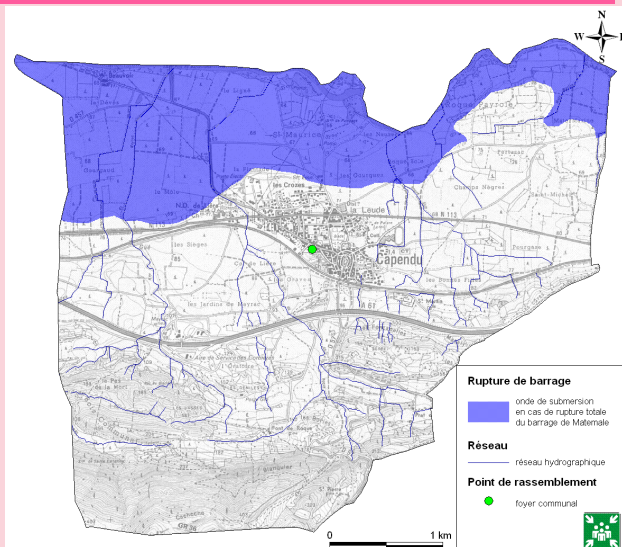
Code danger

336  
1230

Code matière ou n° ONU

# DAM FAILURE

e



Head to high places immediately



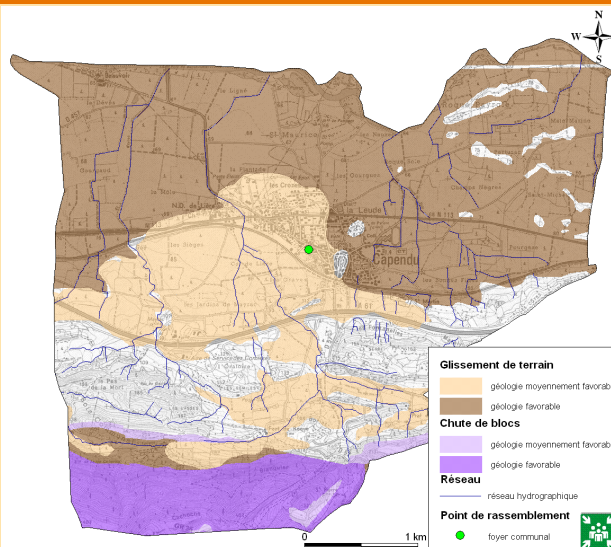
Do not use lifts



Do not turn back

# LANDSLIDE

h



Get away from the area immediately

# STORM

r



Get informed



Take shelter



Do not use closed or flooded roads



Stay away from the roofs



Do not touch power lines on the ground

# EARTHQUAKE

k



Take shelter



Get away from buildings and power



After the earthquake, evacuate the buildings